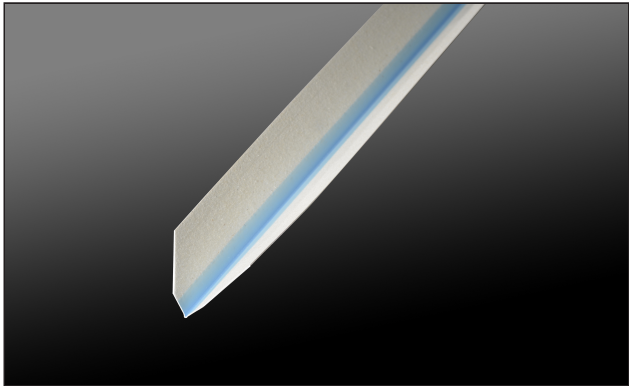
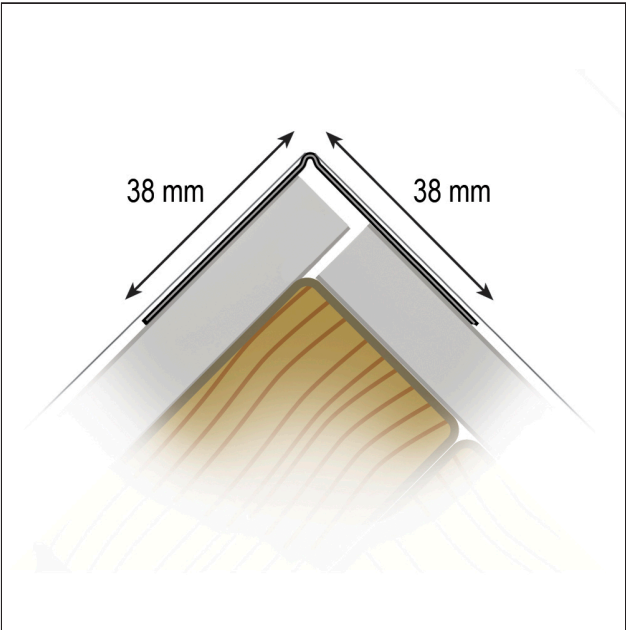


# PRODUCT DATA SHEET

Composite corner bead "BIG-STICK 300" for dry lining  
Bead for 90° outside corner  
Item no. 37325



Status: 16.05.2025 | 12:05



Designation	Composite corner bead "BIG-STICK 300" for dry lining Bead for 90° outside corner
Description	<p>Composite profile for the production of precise edges in drywall construction. The adjusted angel allows an expeditious traetment on 90° outside edges. Because of the reinforced composite head with the PUR composite nose, it's able to produce a particulary stable edge. Inaccurate cut edges or offset joints can be concealed and don't have to be covered up separately.</p> <p>Excellent adhesion of the filler as a result of the completely fibre-coated surface of the composite profile.</p>
Product area	Internal construction
Product category	Filler profiles   Composite profiles
Plaster thickness	1 mm
Material thickness	0,8 mm
Product length	274,000 cm
Revision	Putty the composite to the head of the profile.
Leg length	38 mm
Application Areas	For the use on gypsum plasterboards in the drywall construction, for the production of straight and precise inside and outside edges. The PVC core provides exceptional edge strength and durability, even in high traffic and busy areas.
Underground	The underground has to be sustainable, solid, clean and dry.
Treatment	<p>1. Cut the composite to length and cut the profile corner in a 45° angle. 2. Put the suitable filling compound on the underground or directly on the unprinted side of the profile, for example with the material feeders Mu-Pro MP2 1472, and apply the profile to the edge. 3. Setting the profile with the printed side outwards on. Fixing with the hands or with suitable tools, for example the outside edge roller OSR 1473, under constant pressure. 4. Peel the excess material with a trowel and use this for puttying the legs until the head of the profil. After the drying of the filling compound, the edge can be grinded. 5. With that, the treatment of the composite is finished. Depending on the required surface quality (Q3-Q4), additional filler plies can be necessary. Please notice the technical datasheet of the used filling compound. Don't use under +5°C air-, object- and drying temperature.</p>
Consumption	The consumption of filling compound depends on the structure of the surface and the absorbency of the underground as well as the qualities of the filling compound. Compared to conventional filler profiles, the material input becomes reduced.

# PRODUCT DATA SHEET

Composite corner bead "BIG-STICK 300" for dry lining

Bead for 90° outside corner

Item no. 37325



<b>Tool</b>	An optimal and efficient treatment is able by the material feeders Mud-Pro MP2 1472. For ensuring an optimal contact pressure, use the outside edge roller OSR 1473 or the inside edge roller ISR 1477.
<b>Treatment Temperature</b>	Nicht unter +5°C Luft-, Objekt- und Trocknungstemperatur verarbeiten.
<b>Packaging Unit</b>	50 PCS / 99 BOX
<b>Storage</b>	Store it cold, dry and protected from moisture. Ground-level!
<b>Disposal</b>	The waste of the composite profiles can be disposed with the residual waste.
<b>Annotation</b>	Notice the additional treatment notes and datasheets of the used filling compound.

This product data sheet corresponds to the current state of development of our products and loses its validity upon publication of a new edition. Make sure you are using the latest edition of this information. Warranty and liability are based on delivery according to our general Terms and conditions. Please observe the application assembly and storage guidelines.

All statements without guarantee. Reserve technical changes. Product illustrations may differ from the delivery product. Tender specifications, installation instructions and performance declarations (if required by law) can be found on our homepage. Please respect the environment for a proper disposal!