

PRODUCT DATA SHEET

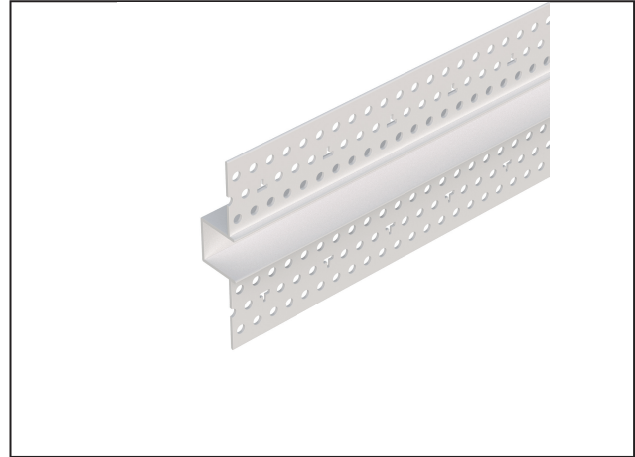
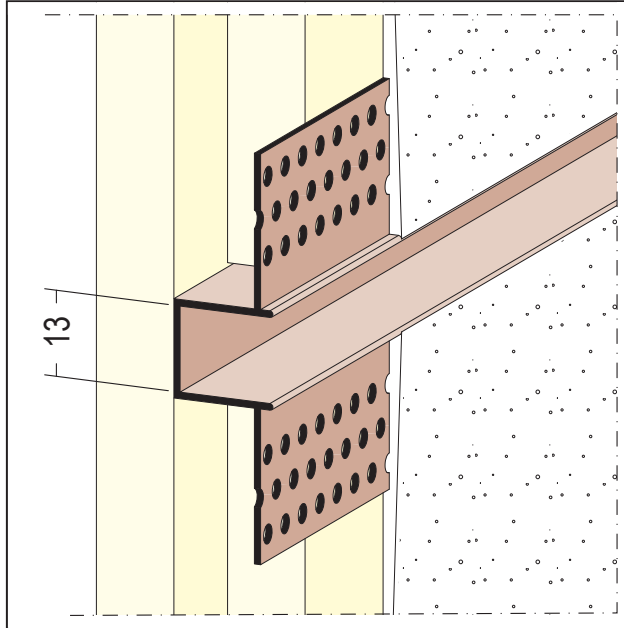
Shadow joint profile for dry lining

12,5 mm PB

Item no. 37724



Status: 28.08.2024 | 12:08



Designation	Shadow joint profile for dry lining 12,5 mm PB
Description	PVC decorative profile with 13-mm shadow joint. For joining on plasterboard panels of 12.5 mm and thicker on one side. For vertical and horizontal applications.
Product area	Internal construction
Product category	Design profiles
Plaster thickness	2 mm
Material	Hard PVC
GK/Plate	ab 12,5 mm
Product length	305 cm
Revision	PVC central piece offers limited possibilities for applying suitable coatings. Approval is required from the coating material manufacturer.
Productcolor	10, white
Treatment	All profiles must also be fastened with clips.
Packaging Unit	20 PCS / 63 BOX
Shadow gap	13 mm

This product data sheet corresponds to the current state of development of our products and loses its validity upon publication of a new edition. Make sure you are using the latest edition of this information. Warranty and liability are based on delivery according to our general Terms and conditions. Please observe the application assembly and storage guidelines.

All statements without guarantee. Reserve technical changes. Product illustrations may differ from the delivery product. Tender specifications, installation instructions and performance declarations (if required by law) can be found on our homepage. Please respect the environment for a proper disposal!